

Disposal Guidelines

- ① Please put out your garbage between 6 AM and 8 AM on collection day.
- ② Do not bring your garbage to a collection site other than the one designated by your neighborhood association..
- ③ Your garbage may not be accepted if you do not follow the separation rules.

BURNABLES Collected Two days per week:

Check the reverse side of this paper and write your locality's collection days here.



- ① Please place in a city-designated garbage bag before disposing.
- ② Please remove human waste from baby diapers before disposing.
- ③ For frying oil, please dispose using a coagulating agent or newspaper.
- ④ Please do dispose any recyclable paper larger than business card size.
- ⑤ Financial aid is available for home composting units. Please inquire with the Environmental Policy Office for details.

RECYCLABLE PAPER AND CLOTHING



Please support your local childrens' association in their volunteer recycling activities. Also, please make use of your local "koshi kaishu" (paper collection) station. For details, please check the koshi kaishu station list.

GARDEN WASTE (tree branches, grass clippings, leaves) Collected once per month.

- Less than 100kg: Deposit once a month at local collection point or bring directly to Kita Seiso Center during normal working hours.
- More than 100kg: Bring directly to Kita Seiso Center during normal working hours.

The collection station's hours are 8-10am. For details, check the "midori gomi information" leaflet.

FOOD TRAYS

Please deposit food trays at storefront collection boxes as much as possible.



WILL NOT BE ACCEPTED

Computers

Must be collected by the maker.



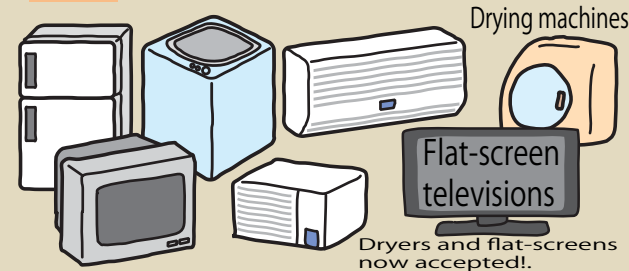
When you throw it away

Contact the computer's maker.

Appliances that fall under the Home Appliance Recycling Law

Electronics retail shops will accept these items.

YOU PAY = refurbishment fee + collection fee



When you throw it away

Take it to the retailer where you bought it.

When you buy a new one

Take the old one to the retailer where you buy the new one.

If you aren't sure where it was purchased, consult with the Environmental Policy Office.

Commercial waste

According to the law it is required that all businesses dispose of waste on their own.



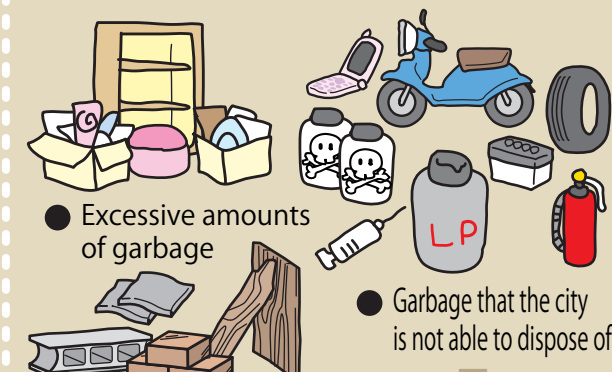
Try to reduce and reuse waste.

Dispose of what you can on your own.

Contract with a licensed city collector.

For commercial waste similar to regular household burnables, of a limited quantity, if you receive the permission of the neighborhood association you can dispose of it in "business use only" bags at your local collection site.

THESE WILL NOT BE COLLECTED!



Garbage that the city is not able to dispose of

Please consult with the retailer.

Bring directly to the Kita Seiso Center or contact a licensed collector.

SEGREGATED DISPOSAL Collected once per month on designated day.

RECYCLABLE MATERIALS

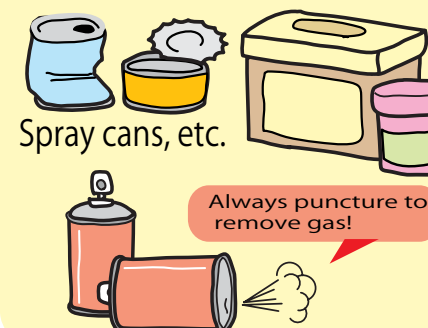
PET BOTTLES

Green Container



CANS

Yellow Container



GLASS BOTTLES

Blue Container

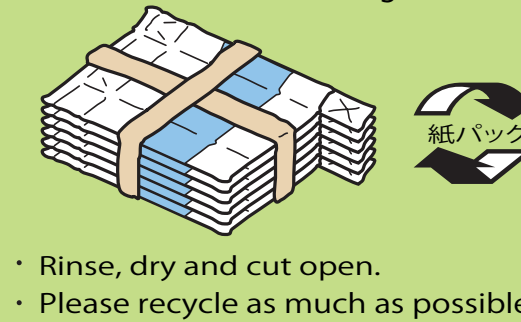


Make sure to:

- ① Remove the contents and leave off the cap.
- ② Rinse out the inside with water.
- ③ Flatten PET bottles.
- ④ Always recycle aluminum cans.

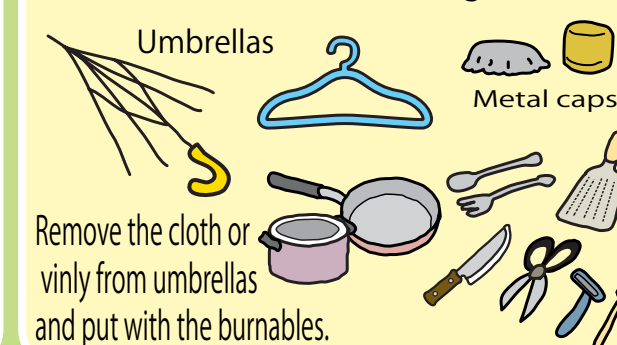
BEVERAGE CARTONS

Green Container With Sign



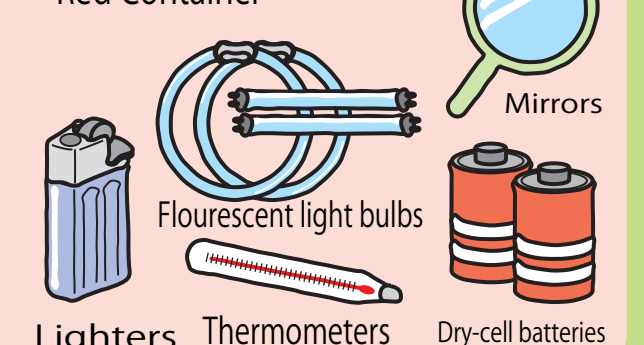
OTHER METALS

Yellow Container With Sign



HAZARDOUS WASTE

Red Container



GLASS AND CERAMICS

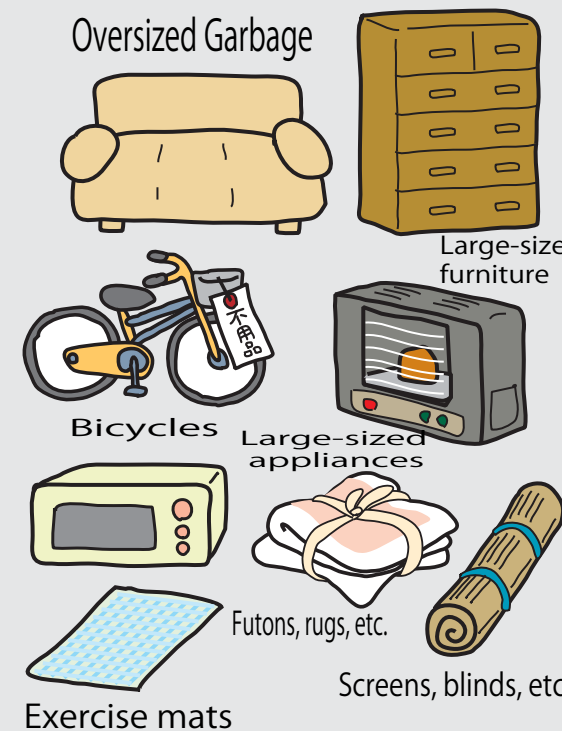
Blue Container With Sign

Switch to a new container as soon as the previous one is filled halfway.



OTHERS

Oversized Garbage



Others (put in clear plastic)

Small-sized appliances



Deposit garbage in an orderly fashion as not to obstruct traffic.

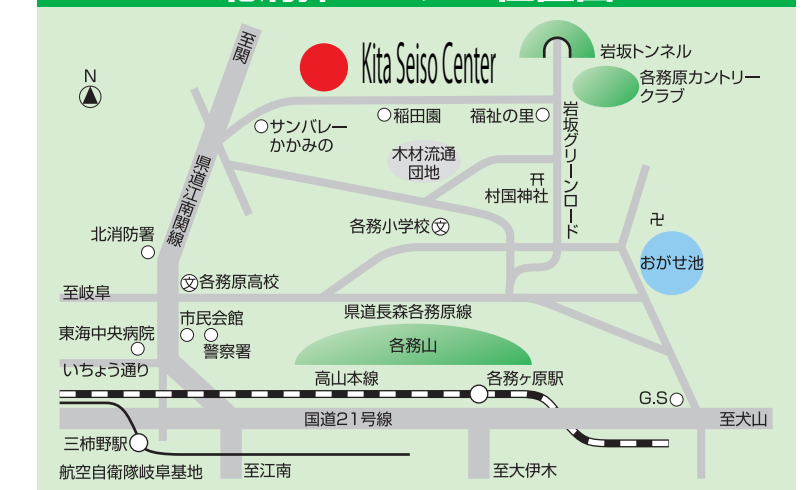
4月	5月	6月	7月
8月	9月	10月	11月
12月	1月	2月	3月

Kita Seiso Center Delivery Reception Hours

Household garbage	Day	Time
Quantity	Weekdays	8:45AM - 4:00PM
Less than 100kg	Saturday	8:45AM - 11:00AM
More than 100kg		

- Closed on Sundays and all public holidays.
- ① Please bring your own garbage to the Kita Seiso Center directly. It is illegal to deposit other people's garbage for business purposes without a license.
 - ② Please present your driver's license or ID to the receptionist.
 - ③ Only garbage from Kakamigahara City residents will be accepted.

北清掃センター位置図



問い合わせ先

- ◆ Environmental Policy Office 058-383-4230 (直通)
- ◆ Kita Seiso Center 058-384-3616